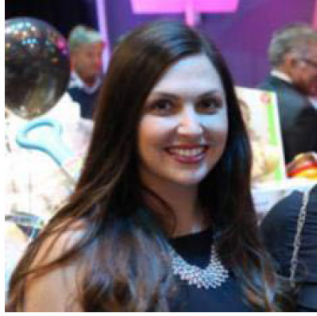


# Meet our 2018 Board...



**Natalie Sauer**  
President

Company:  
Northwestern  
Mutual



**Susan Wyant-Hermansader**  
Vice President

Company:  
Team Pennywise,  
Real Estate



**Cheryl Chang**  
Secretary

Company:  
Keesal, Young &  
Logan



**Erin Dearden**  
Development Chair

Company:  
Teledyne



**Jon Wong**  
Events Chair

Company:  
Valero



**Elizabeth Horin**  
Membership

Company:  
Area Hospital



**Maurielle Pierson**  
Volunteer Chair

Company:  
Precision Property  
Measurements



**Rebecca Jackson Lai**  
LBRMH Staff Liaison



**Ronald  
McDonald  
House®**  
LONG BEACH